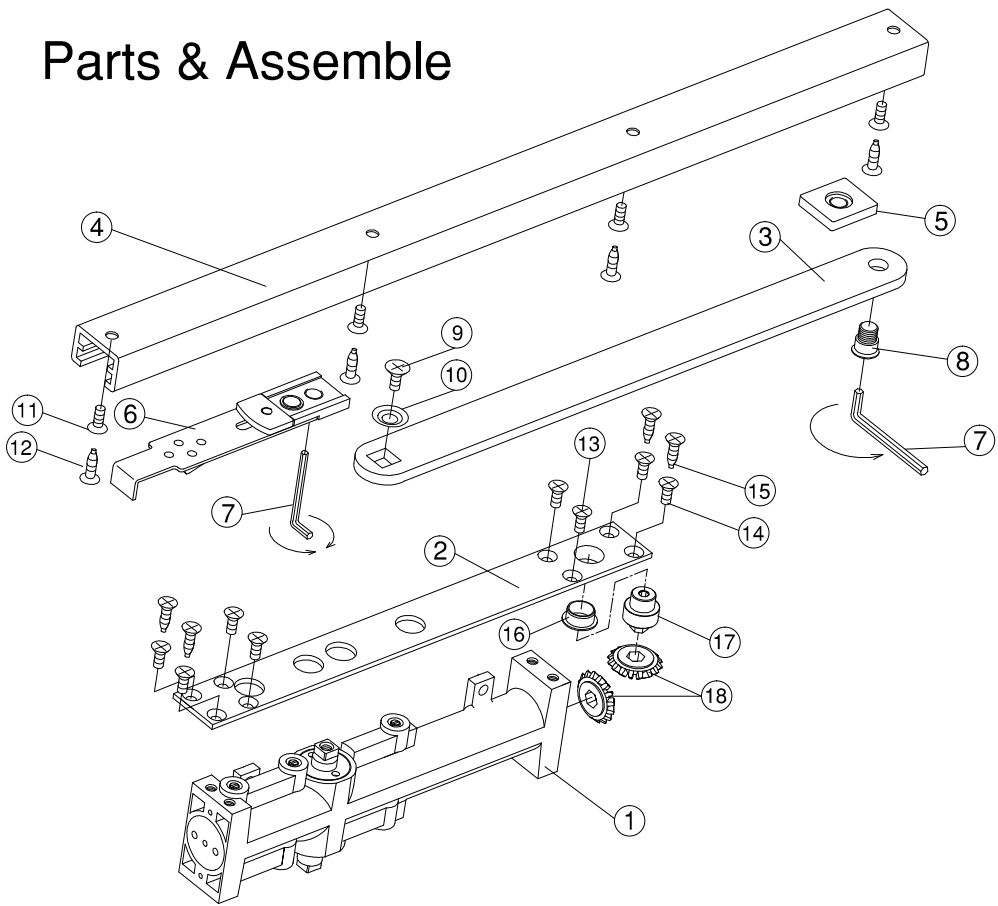
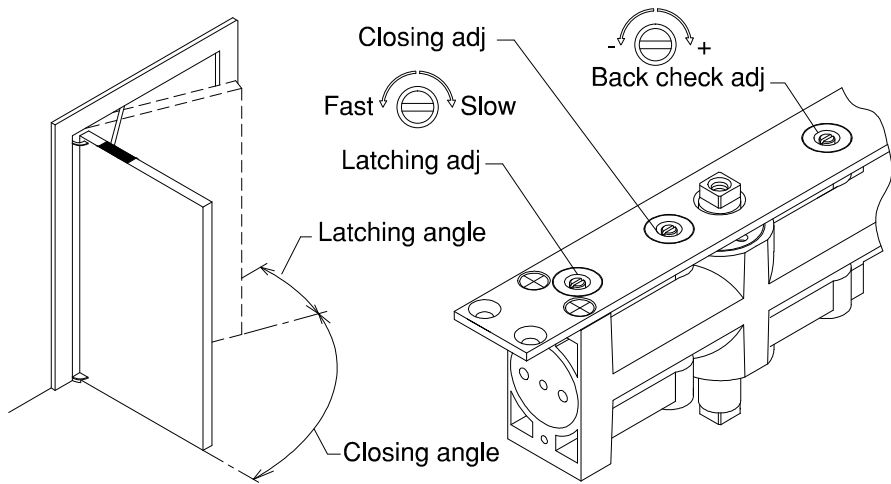


Parts & Assemble

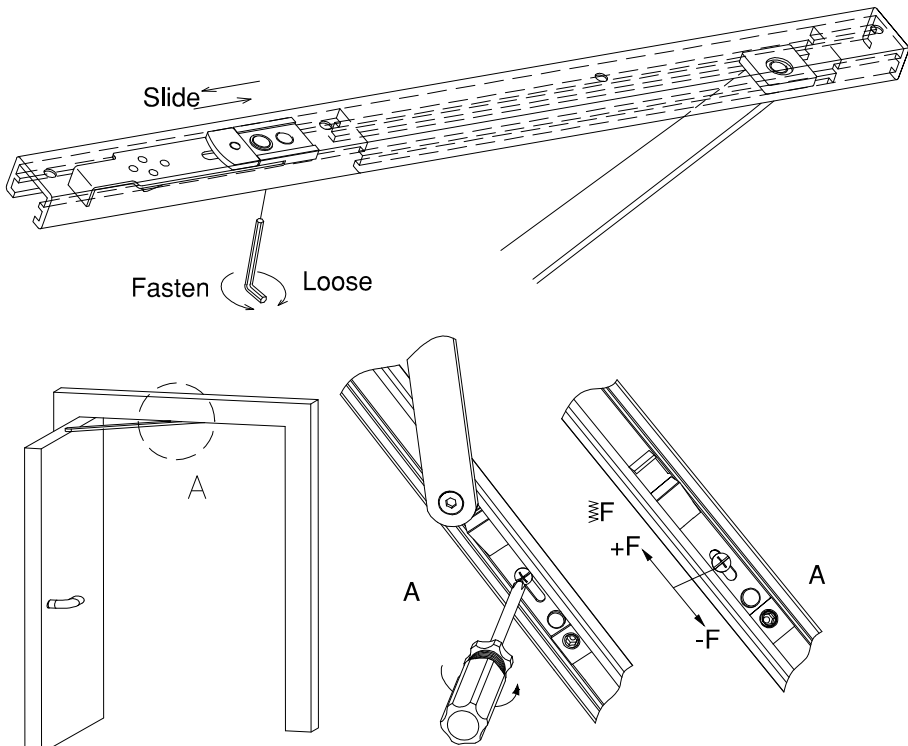


NO	Parts	QTY	NO	Parts	QTY
①	Body	1	⑪	M5x15L	4
②	Fixing plate	1	⑫	3/16"x1"L (wooden screw)	4
③	Main arm	1	⑬	M5x12L	4
④	Track	1	⑭	M5x15L	4
⑤	Stopper	1	⑮	3/16"x1"L (wooden screw)	4
⑥	Spring plate	1	⑯	Bush	1
⑦	Wrench 5mm	1	⑰	Regulating connector	1
⑧	Fixing screw M8x1	1	⑱	Gear	2
⑨	M5x12L	1			
⑩	Washer	1			

SPEED adjustment BACK CHECK adjustment

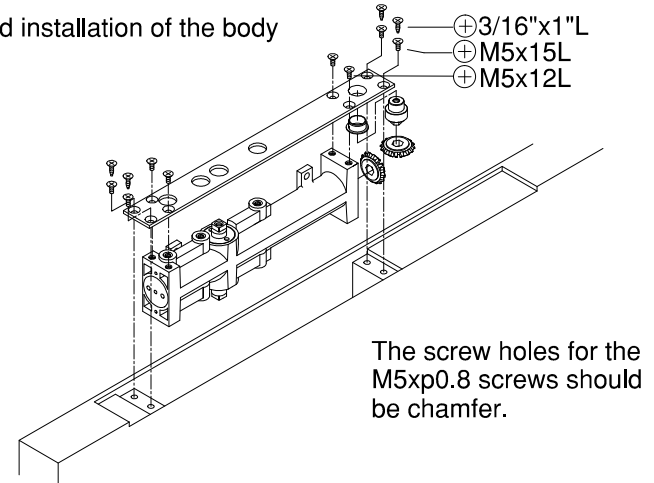


Opening angle (Hold open adjustment)

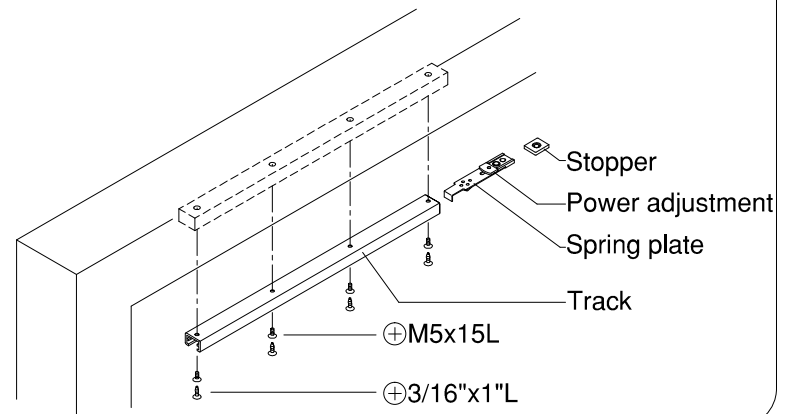


INSTALLATION

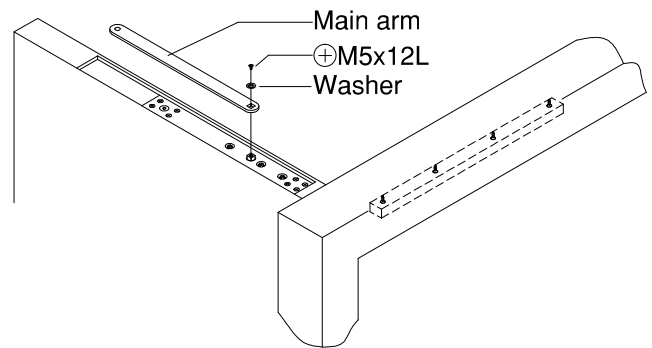
① Fixing and installation of the body



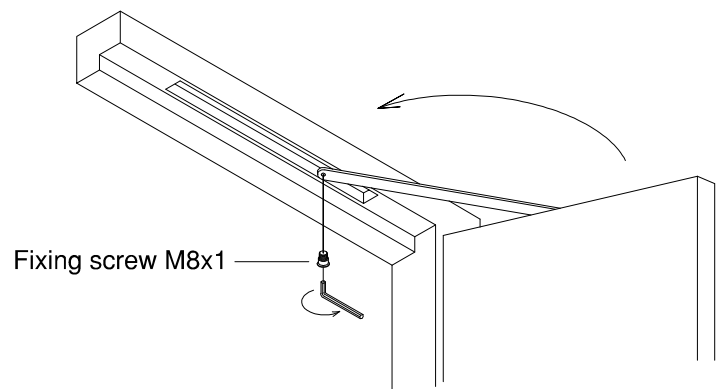
② Fixing and installation of the track arm



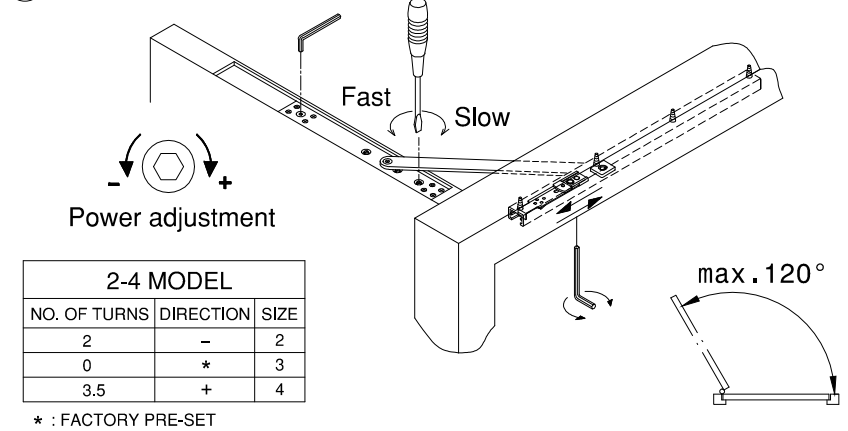
③ Combining the main arm and body



④ Combining the main arm and the sliding part in the track

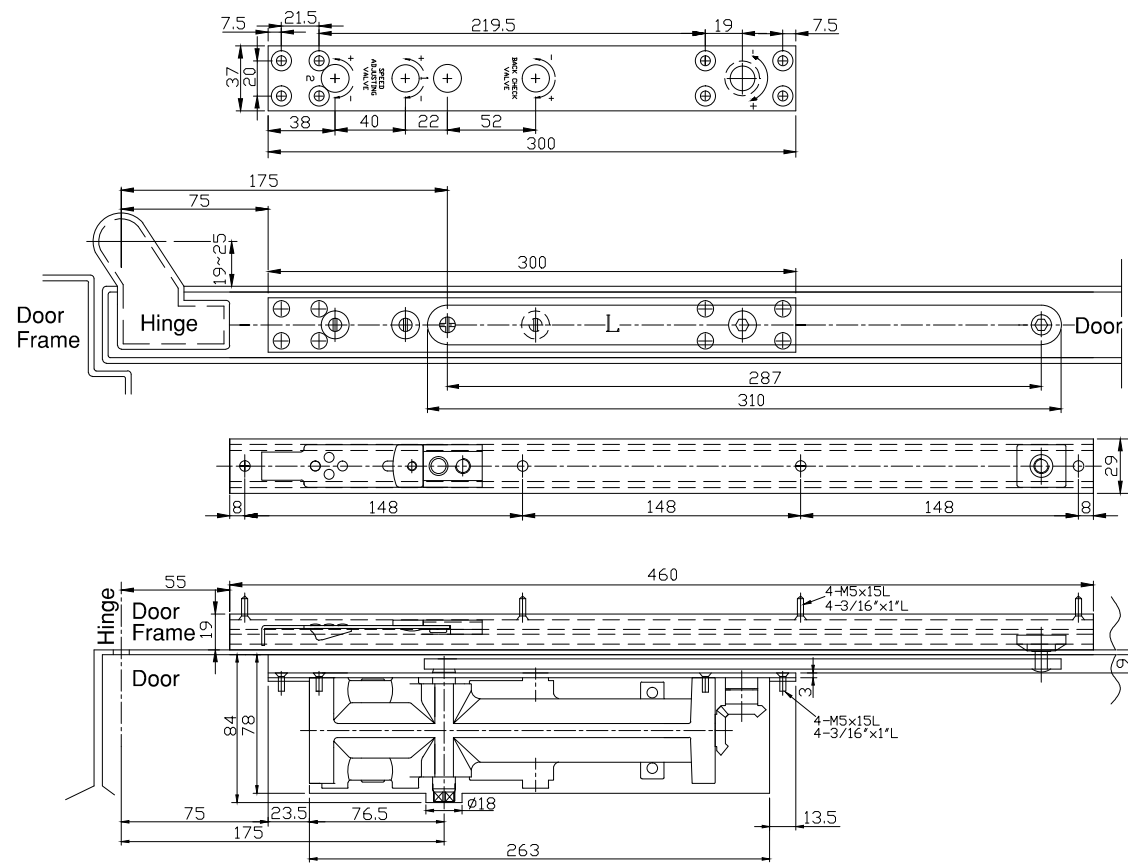


⑤ Closing speed adjustment

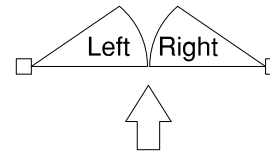
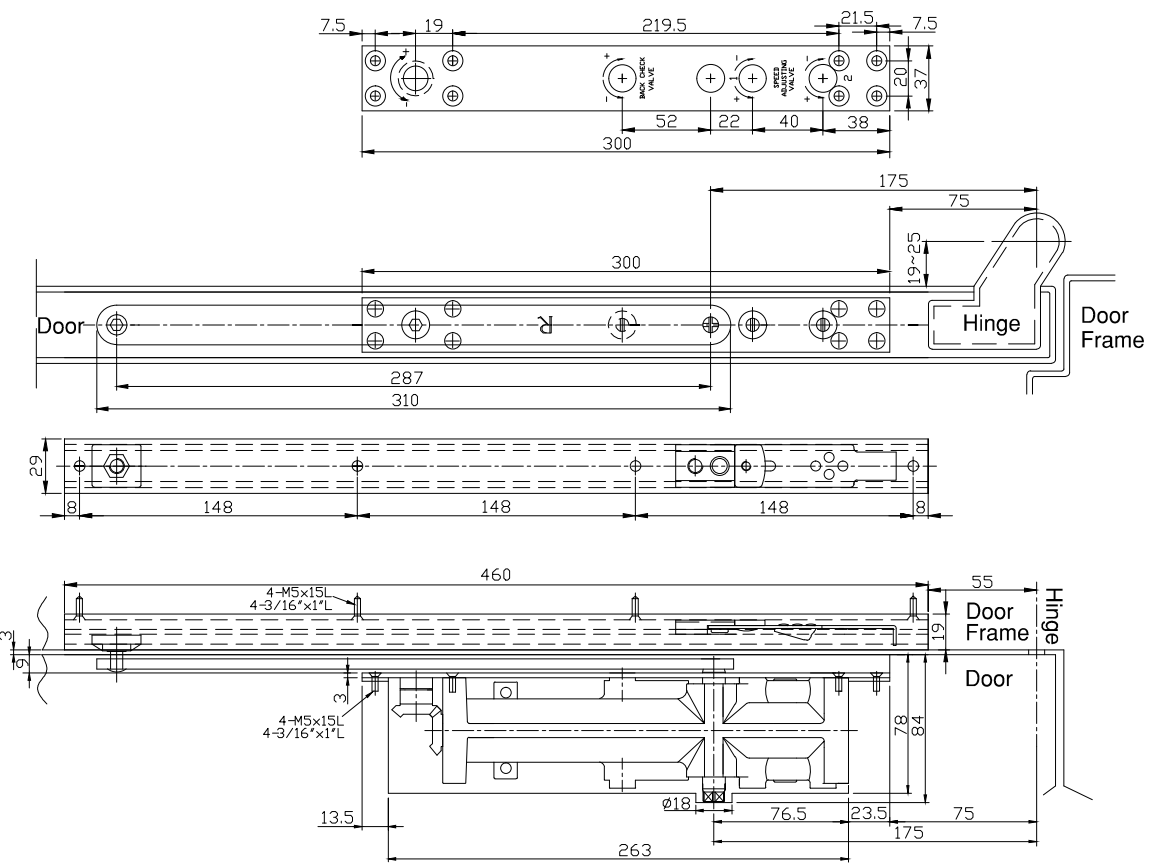


Concealed Door Closer

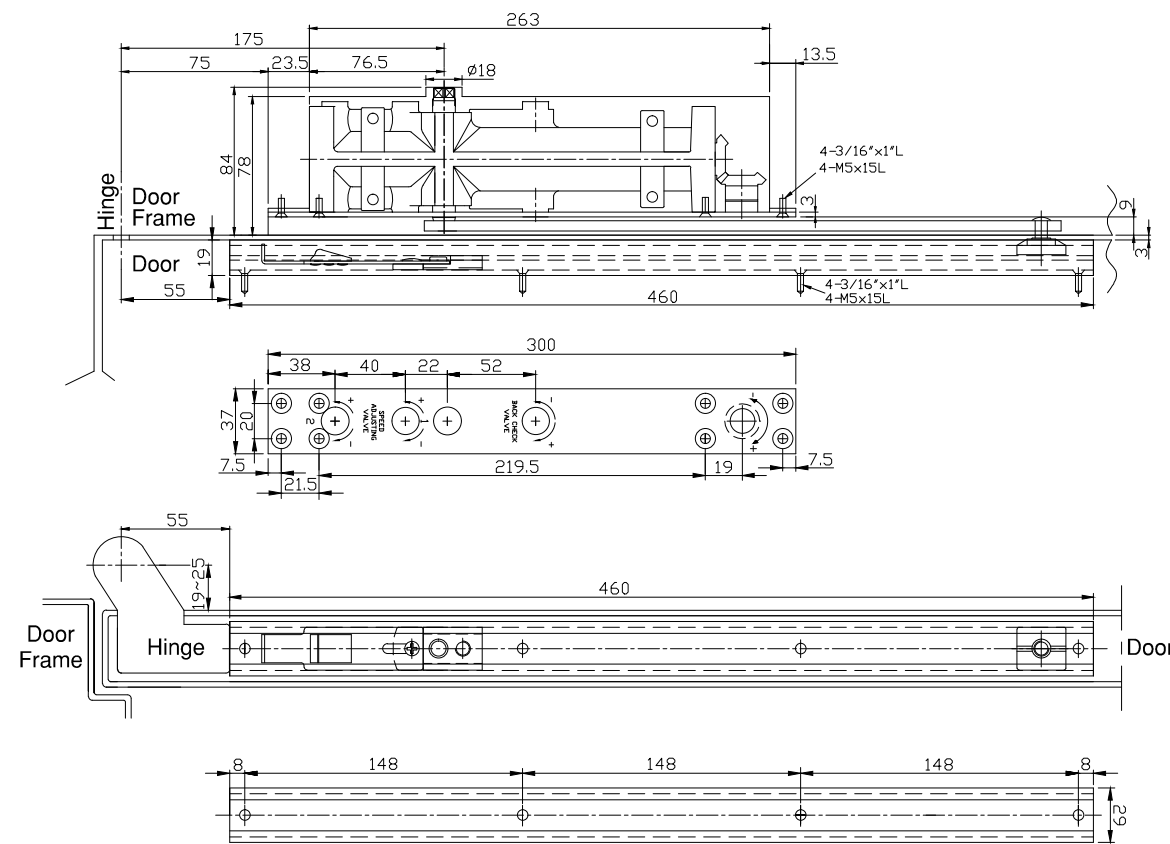
⊗ Left hand opening



⊗ Right hand opening



⊗ Left hand opening
(Top jamb installation)



⊗ Right hand opening
(Top jamb installation)

